

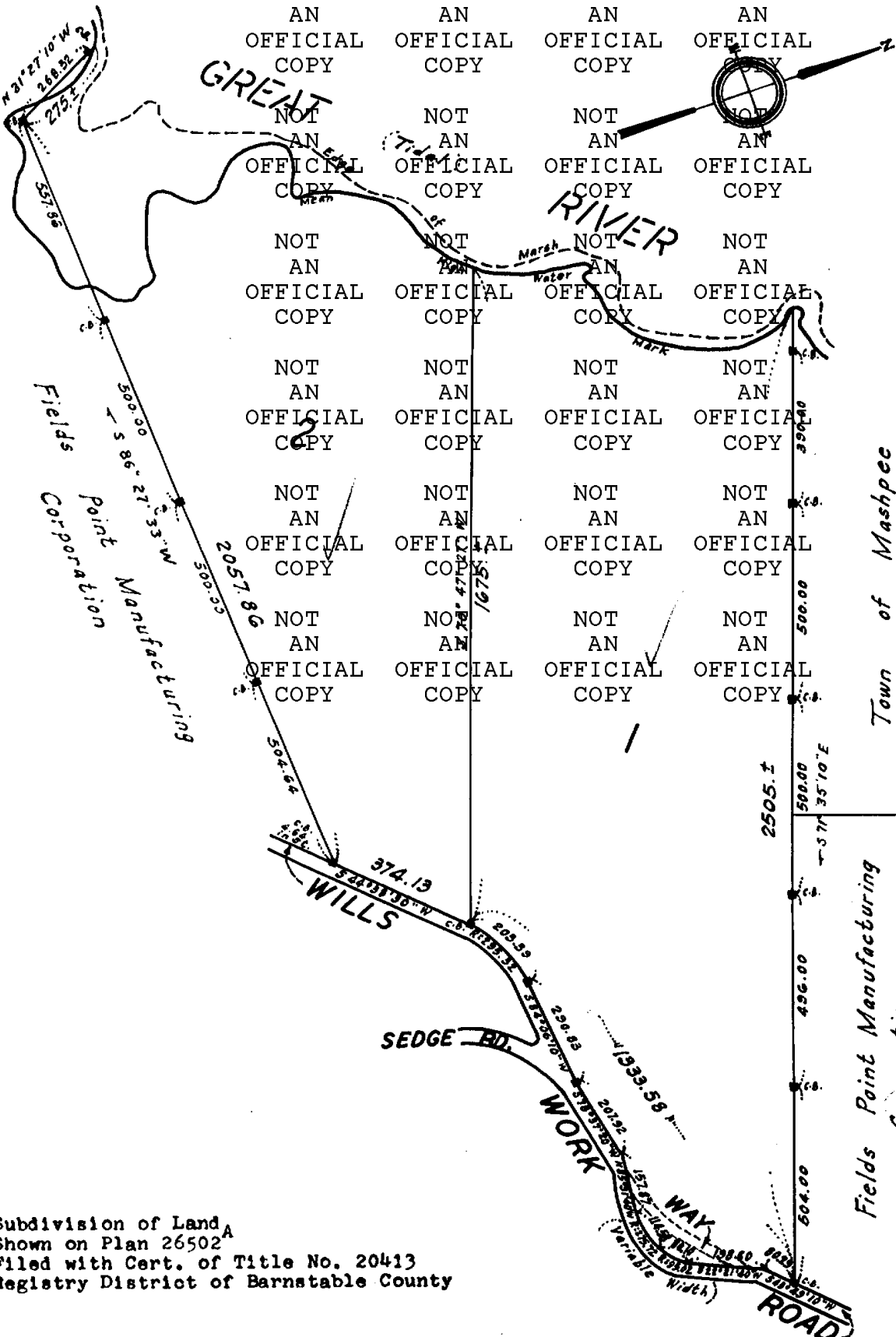
SUBDIVISION PLAN OF LAND IN MASHPEE

26502B

Whitney & Bassett, Engineers

December 1957

NOT AN OFFICIAL COPY	NOT AN OFFICIAL COPY	NOT AN OFFICIAL COPY	NOT AN OFFICIAL COPY
NOT AN OFFICIAL COPY	NOT AN OFFICIAL COPY	NOT AN OFFICIAL COPY	NOT AN OFFICIAL COPY
NOT AN OFFICIAL COPY	NOT AN OFFICIAL COPY	NOT AN OFFICIAL COPY	NOT AN OFFICIAL COPY
NOT AN OFFICIAL COPY	NOT AN OFFICIAL COPY	NOT AN OFFICIAL COPY	NOT AN OFFICIAL COPY
NOT AN OFFICIAL COPY	NOT AN OFFICIAL COPY	NOT AN OFFICIAL COPY	NOT AN OFFICIAL COPY
NOT AN OFFICIAL COPY	NOT AN OFFICIAL COPY	NOT AN OFFICIAL COPY	NOT AN OFFICIAL COPY
NOT AN OFFICIAL COPY	NOT AN OFFICIAL COPY	NOT AN OFFICIAL COPY	NOT AN OFFICIAL COPY
NOT AN OFFICIAL COPY	NOT AN OFFICIAL COPY	NOT AN OFFICIAL COPY	NOT AN OFFICIAL COPY



Fields Point Corporation Manufacturing

Town of Mashpee

Fields Point Manufacturing Corporation

Subdivision of Land
 Shown on Plan 26502A
 Filed with Cert. of Title No. 20413
 Registry District of Barnstable County

Separate certificates of title may be issued for land shown hereon as *lots 1 & 2* By the Court.

Thomas B. Cummings
 Deputy Recorder

APR. 9, 1958

Copy of part of plan filed in
LAND REGISTRATION OFFICE
 APR. 9, 1958
 Scale of this plan 300 feet to an inch
 C.M. Anderson, Engineer for Court