

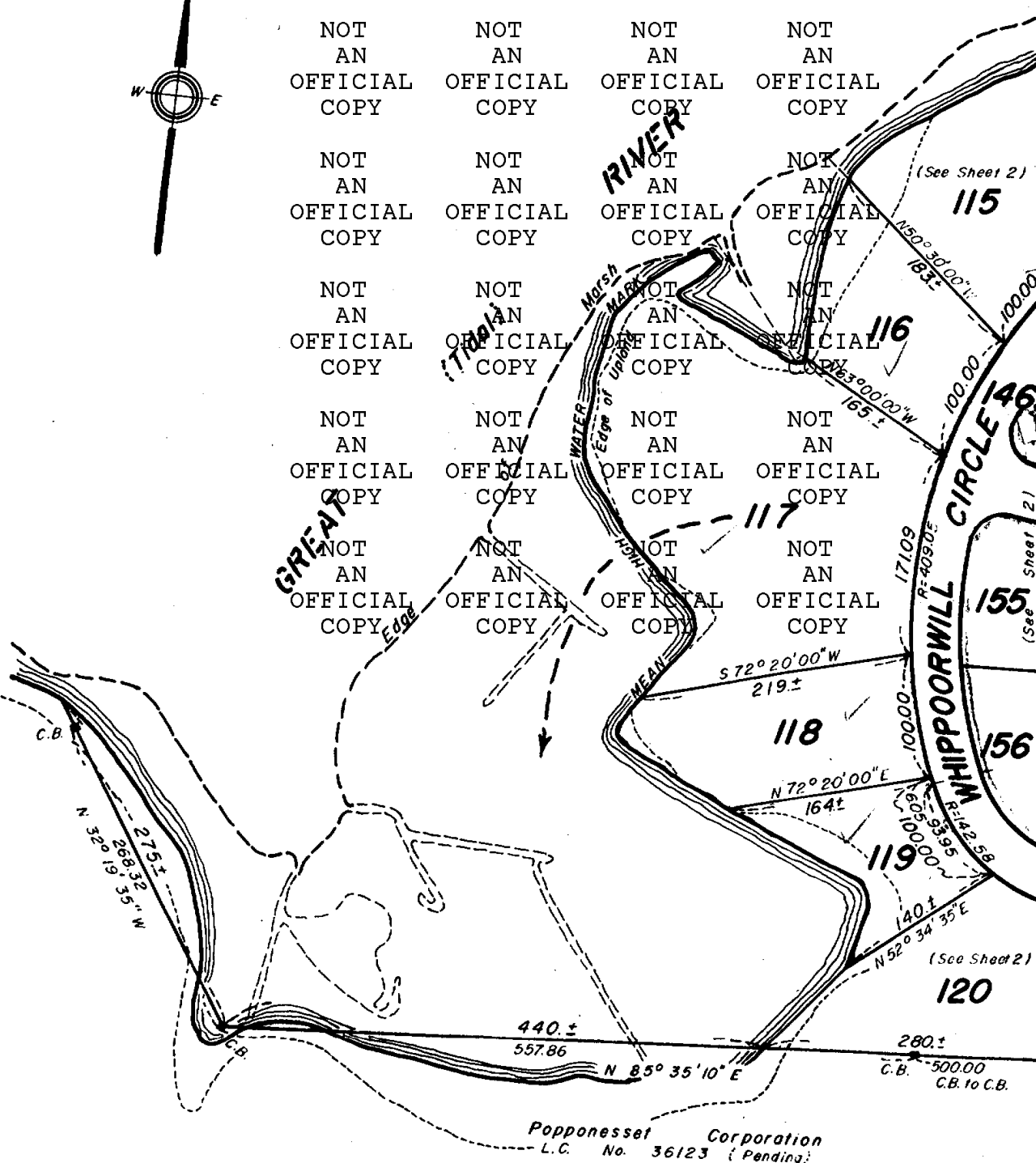
SUBDIVISION PLAN OF LAND IN MASHPEE

26502^E
SHEET 1

Whitney & Bassett, Surveyors



NOT AN OFFICIAL COPY	December 1969 NOT AN OFFICIAL COPY	NOT AN OFFICIAL COPY	NOT AN OFFICIAL COPY
NOT AN OFFICIAL COPY	NOT AN OFFICIAL COPY	NOT AN OFFICIAL COPY	NOT AN OFFICIAL COPY
NOT AN OFFICIAL COPY	NOT AN OFFICIAL COPY	NOT AN OFFICIAL COPY	NOT AN OFFICIAL COPY
NOT AN OFFICIAL COPY	NOT AN OFFICIAL COPY	NOT AN OFFICIAL COPY	NOT AN OFFICIAL COPY
NOT AN OFFICIAL COPY	NOT AN OFFICIAL COPY	NOT AN OFFICIAL COPY	NOT AN OFFICIAL COPY



Popponesset Corporation
L.C. No. 36123 (Pending)

Subdivision of Lot 2
Shown on Plan 26502^B
Filed with Cert. of Title No. 21704
Registry District of Barnstable County

Separate certificates of title may be issued for land
shown hereon as L.P.s. 98 thru 163
By the Court.

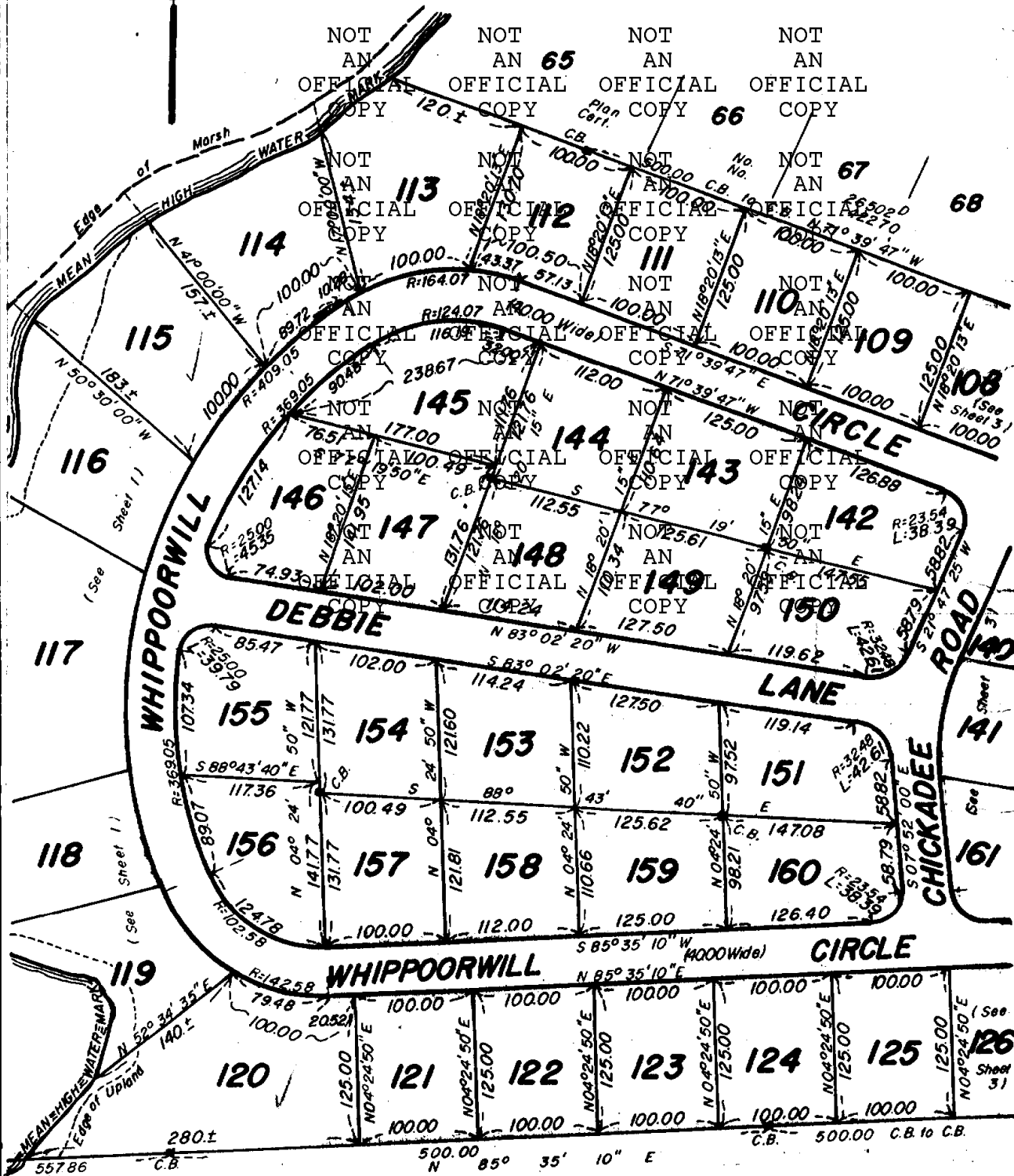
Copy of part of plan
filed in
LAND REGISTRATION OFFICE
FEB 24 1970
Scale of this plan 100 feet to an inch
R. L. Woodbury, Engineer for Court 1/2

MARCH 25 1971
Margaret M. D. [Signature]
Recorder

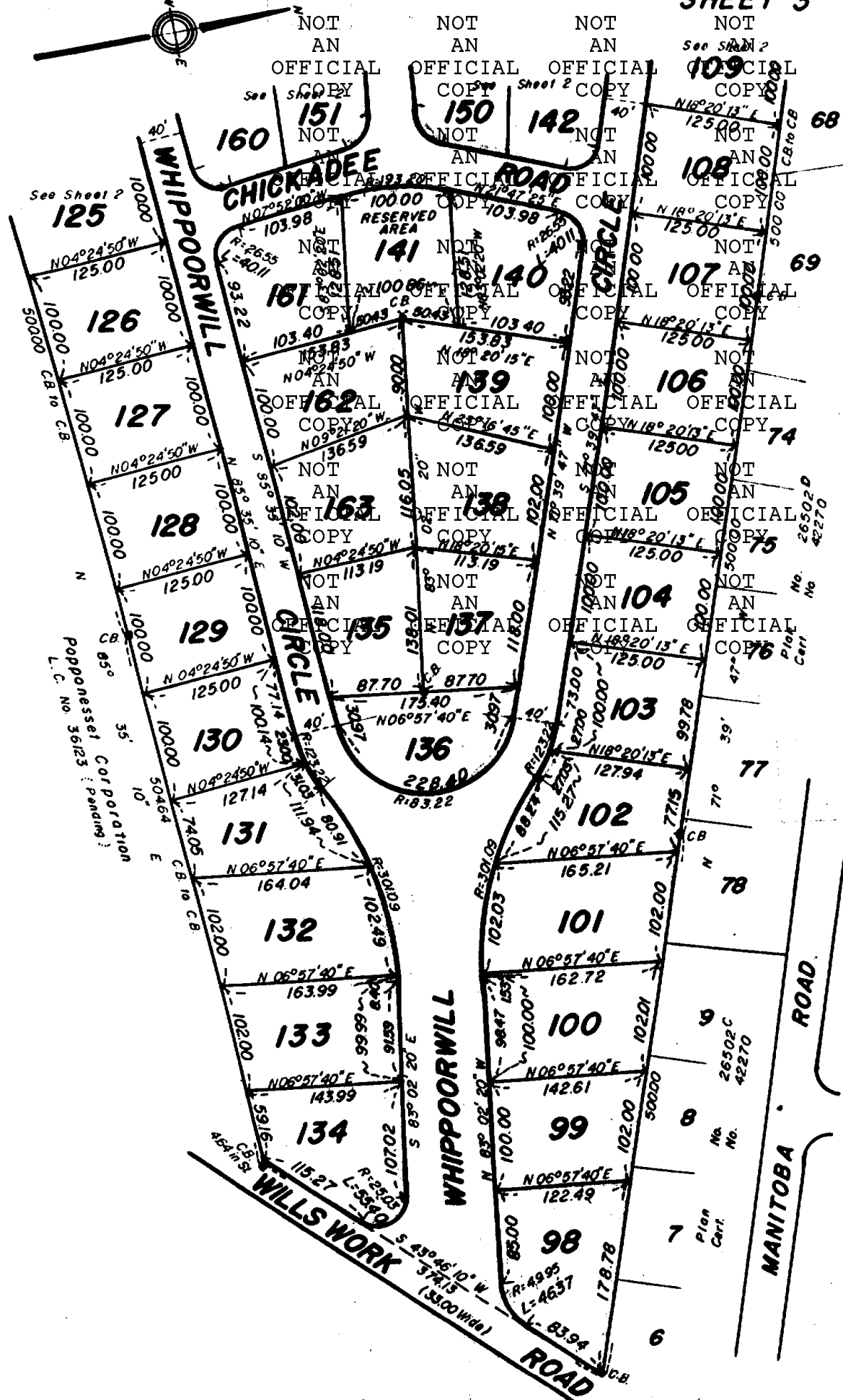


NOT AN OFFICIAL COPY NOT AN OFFICIAL COPY NOT AN OFFICIAL COPY NOT AN OFFICIAL COPY

NOT AN OFFICIAL COPY NOT AN OFFICIAL COPY NOT AN OFFICIAL COPY NOT AN OFFICIAL COPY



Popponesset Corporation
L.C. No. 36123 (Pending)



Scale of this plan 100 feet to an inch